



BAY CROSSINGS

"The Voice of the Waterfront"

May 2013 Vol.14, No.5

Wonders by the Waterfront
Exploratorium's Magical New Home

Mother's Day in the Bay
Aquatic Moms Deserve Love Too

Pedaling to Spare the Air
May Is National Bike Month

Ferry Engineer's Farewell
Years of Making the Boats Move

Complete Ferry Schedules for all SF Lines

Rosenblum CELLARS.

TASTE, TOUR RELAX

Just a short ferry ride across San Francisco Bay lies the original urban winery, Rosenblum Cellars.

Alameda is our urban island with no pretension. Our tasting room is a true gem, with a rustic urban charm that attracts fans from around the world to enjoy the unique, relaxed atmosphere.

TWO FOR ONE TASTING
with this ad.
\$10 value

TASTING ROOM OPEN DAILY
FROM 11AM TO 6PM



facebook

www.rosenblumcellars.com

twitter

2900 Main St. Suite 1100 Alameda, CA 1-877-GR8-ZINS

Please enjoy our wines responsibly. © 2011 Rosenblum Cel Alameda, CA www.DrinkIQ.com

Great food to celebrate life in the City !

Enjoy a ten minute walk from the Ferry Building or short hop on the F-Line



Crab House at Pier 39

X Voted "Best Crab in San Francisco"

- Sizzling Skillet-roasted Mussels, Shrimp & Crab
- Romantic Cozy Fireplace
- Stunning Golden Gate Bridge View

Open Daily 11:30 am – 11 pm
2nd Floor, West Side of Pier 39
Validated Parking

crabhouse39.com 415.434.2722

**FRANCISCAN
CRAB RESTAURANT**

- Whole Dungeness Crab
- Breathtaking Bay Views
- Bay side of Historic Fisherman's Wharf

Open Daily 11:30 am – 11 pm
Pier 43 1/2
Validated Parking

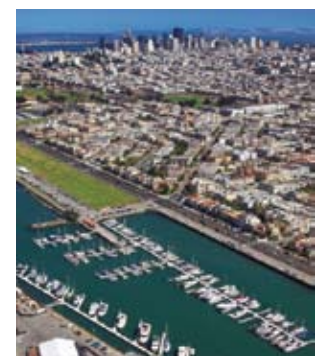
415.362.7733

franciscanrestaurant.com



Capacity. Capability. Character.

West Coast Leader In Aggregates, Dredging, and Marine Construction Services



Call 415-258-6876 or visit our website at www.dutragroup.com



See the best of San Francisco

BIG BUS TOURS



Golden Gate Bridge

Live Guides

Recorded Narration

Hop-on Hop-off

Free Cycle Hire

www.opentopsightseeing.com • 1-877-855-TOUR



SAN FRANCISCO CRUISES



Private Charters & Hop-on Bus Tours Available

GOLDEN GATE BAY CRUISE®

The Original for 70 Years! Sail under the Golden Gate Bridge and around Alcatraz, and discover San Francisco's history in 12 languages. 8-14 daily sailings starting at 10 AM.

CALIFORNIA TWILIGHT CRUISE®

Enjoy views of the spectacular city lights, live guitar entertainment and hearty appetizers from the buffet on this relaxed 2-hour cruise.



Pier 43½ Fisherman's Wharf redandwhite.com 415-673-2900

'GREATEST GENERATION' & MEMORIAL CRUISE

HONORING WORLD WAR II VETERANS
aboard the
SS JEREMIAH O'BRIEN



TO OUR FRIENDS @ BAY CROSSINGS-TRY A RIDE UNDER STEAM!



ONLY...

\$85

CALL 415-544-0100 OR VISIT
'SSJEREMIAHOBRIEN.ORG'
WORLD WAR II VETERANS SAIL FOR FREE
PLEASE JOIN US!

MAY 18, 2013 LEAVES PIER 45
FOUR HOUR CRUISE WITH LIVE MUSIC, TOURS, COLOR
GUARD AND MORE. FUN FOR THE WHOLE FAMILY!

BAYCROSSINGS

"The Voice of the Waterfront"

columns

- 08** **BELOW THE HELM**
Engineer Earl Brown
by **Matt Larson**
- 12** **BAYKEEPER**
On Patrol for Pollution
by **Deb Self**
- 16** **SAILING ADVENTURES**
Art for the Ear
by **Captain Ray**

features

- 14** **WATERFRONT MAGIC**
Exploratorium Dazzles at
New Location on Pier 15
by **BC Staff**
- 18** **GREEN PAGES**
City Group Diverts Waste
One Home at a Time
by **Bill Picture**

news

- 06** **WATERFRONT NEWS**
Port of Oakland Updates
Transparency Policies
by **Patrick Burnson**
- 10** **WETA Expands Ferry
Service to South S.F.**
- 10** **May 9 Is 19th Annual
Bike to Work Day**
- 11** **IT CAME FROM
BENEATH THE SEA**
Moms of the Bay
by **Mallory Johnson**
- 17** **A.C. CORNER**
Oracle Team USA
Launches Second AC72
- 20** **May Brings Spring Events
to Jack London Square**
- 21** **CULTURAL CURRENTS**
Dancing, Running, Racing
by **Paul Duclos**



guides

- 22** **WATERFRONT ACTIVITIES**
Our recreational resource guide
- 24** **BAY AREA FERRY SCHEDULES**
Be on time for last call
- 26** **AROUND THE BAY**
To see, be, do, know

BAYCROSSINGS

May 2013 Volume 14, Number 5

Bobby Winston, Proprietor
Joyce Aldana, President
Joel Williams, Publisher
Patrick Runkle, Editor

ADVERTISING & MARKETING

Joel Williams, Advertising & Marketing Director

GRAPHICS & PRODUCTION

Francisco Arreola, Designer / Web Producer

ART DIRECTION

Francisco Arreola; Patrick Runkle; Joel Williams

COLUMNISTS

Captain Ray Wichmann;
Paul Duclos; Patrick Burnson;
Deb Self; Matt Larson

WRITERS & PHOTOGRAPHERS

Bill Picture; Joel Williams;
Mallory Johnson

ACCOUNTING

Cindy Henderson

Advertising Inquiries:

(707) 556-3323, joel@baycrossings.com

Bay Crossings SF Ferry Building Store

(415) 362-0717

Clipper customer service center

(877) 878-8883

For Transit Information - Dial 511

Bay Crossings

Ferry Building, #22

San Francisco, CA 94111

www.baycrossings.com

A Division of Nematode Media, LLC



With three times more space overall than its previous home, the new Exploratorium will engage the curiosity and creativity of visitors as they explore 150 brand-new exhibits amongst more than 600. For the first time, the Exploratorium expands its investigations into the Bay, City, and outdoor landscape. Image by Amy Snyder © Exploratorium, All rights reserved.

Corrections & Letters

We appreciate the opportunity to publish our readers' comments, letters or requests for corrections, which can be sent to joel@baycrossings.com.

LOCALS' NIGHT



HALF PRICE*
THURSDAY, MAY 9 | 4 – 9 PM

Bay Area locals enjoy free live entertainment plus 50% off food, shopping, attractions and drinks at participating PIER 39 merchants.*

For more locals-only discounts, visit
pier39.com/LocalAdvantage

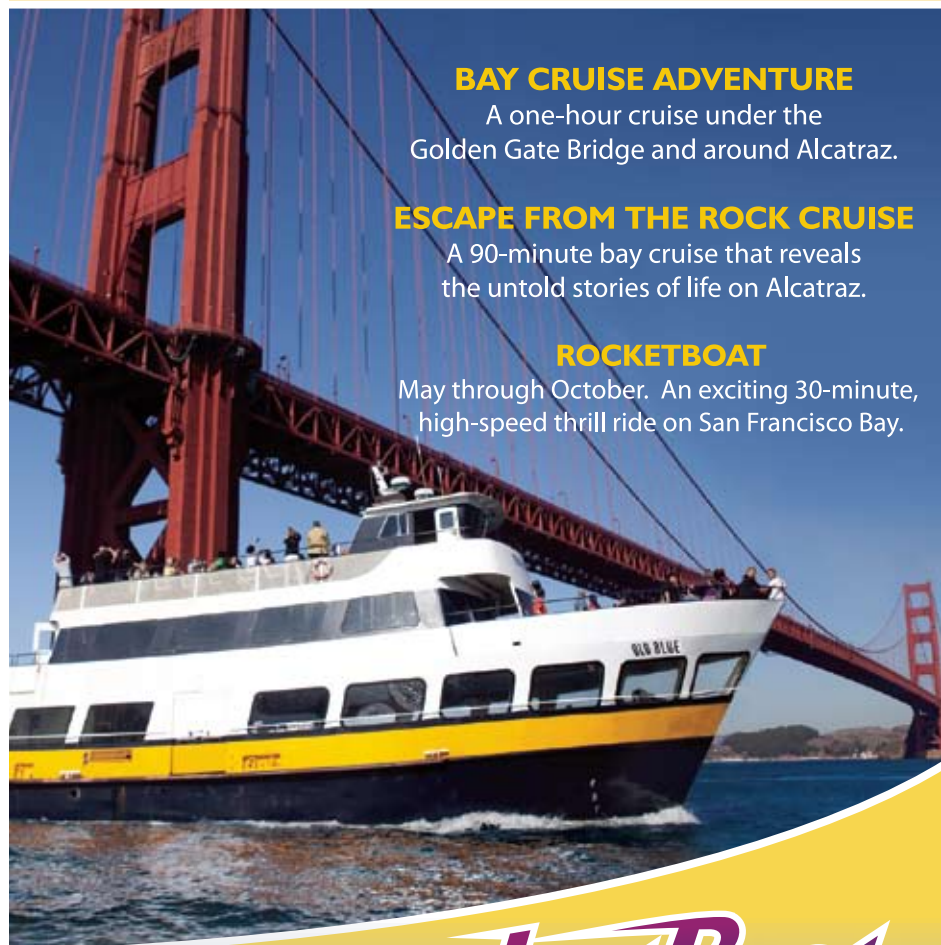
PIER
39



*Must reside within the PIER 39 Local Advantage region. Must be 21 years of age or older to consume alcohol. Valid proof of residency and age will be required. Discounted items may vary by merchant. Some restrictions apply. For complete list of participating merchants, discounts and residency guidelines/restrictions, visit pier39.com.

BLUE & GOLD FLEET

Ferries • Bay Cruises • RocketBoat



BAY CRUISE ADVENTURE

A one-hour cruise under the Golden Gate Bridge and around Alcatraz.

ESCAPE FROM THE ROCK CRUISE

A 90-minute bay cruise that reveals the untold stories of life on Alcatraz.

ROCKETBOAT

May through October. An exciting 30-minute, high-speed thrill ride on San Francisco Bay.


PIER 39 San Francisco

**A 30 MINUTE
BLAST ON THE BAY!**

**MAY thru
OCTOBER**



415.773.118 • blueandgoldfleet.com • PIER 39

Port of Oakland Updates Policies to Ensure Transparency

BY PATRICK BURNSON

Port of Oakland staff provided a progress report on the port's policy strengthening efforts to the Oakland Board of Port Commissioners at the regularly scheduled public board meeting recently. Updates included a new purchase card policy, employee ethics training and other policy changes—all oriented toward changing the port culture to one that adheres to higher standards of ethics, accountability and transparency.

"It's a milestone relative to the commitment that we made to the public to become a more accountable and transparent organization," said Acting Executive Director Deborah Ale Flint. She added that these policies do not require board approval.

As *Bay Crossings* reported late last year, the port's self-assessment began with its strategic planning process in 2009-2010, and then accelerated in fall 2012 when its staff learned that top leadership was involved in what was perceived as an abuse of expense accounts.

"We recognized that there was a gap in our policies that allowed areas of the port to function in a way that did not align with our core values as an organization," said Flint. "We recognized that we needed to look at our policies in a comprehensive manner so that we could make changes in a more meaningful way to transform our organization."

New Report Discusses Use of Ocean Cargo Emissions Data

A new report published by BSR's Clean Cargo Working Group highlights corporate practices in using ocean transport emissions data.

BSR conducted interviews with Clean Cargo shippers—companies buying transportation services—to find out how they use Clean Cargo emissions data, how they integrate this data into their business processes, and what benefits they receive from being part of the group.

Highlights include:

- Procurement decision-making: 78 percent of shippers use Clean Cargo emissions data to inform their procurement decision-making process.



Photo by Joel Williams

In an effort to strengthen accountability, the Port of Oakland has instituted a new purchase card policy, employee ethics training and other policy changes—all oriented toward changing the port culture to one that adheres to higher standards of ethics, accountability and transparency.

- Sustainability reporting: 56 percent of shippers use Clean Cargo emissions data either in their sustainability performance reporting or for other uses, such as to calculate their own carbon footprint, as well as the supply chain carbon footprint of their customers.
- Intermodal transport comparison: Shippers highlighted that Clean Cargo emissions data enables them to compare different modes of transportation, and make informed decisions where it may be possible to shift certain flows to ones with lower emissions.
- Incoterms 2010: Who is responsible for tasks, fees or documentation?
- Navigating exports: I have a salesperson that has sold to a country on one of the denied lists? How do I know if and how to work with these countries?
- Shipping to a new country or a new consignee: How do I map thru the obstacle course of unknowns?

Oakland-Based Tech Company Updates ChassisManager Program

International Asset Systems (IAS), an Oakland-based technology company serving the ocean container industry, announced new developments to the "ChassisManager" program.

Last month four ocean carriers (OOCL, Cosco, Hyundai, Hanjin) began sending data that determines if a chassis trip should be billed to the ocean carrier or to the motor carrier using the chassis. According to IAS spokesmen, these ocean carriers join others already using simpler business rules within ChassisManager. Additional ocean carriers are scheduled for onboarding over the next two months. HRCF and IAS have worked closely with the ocean carriers to translate the very complex exception-based billing rules into clear invoicing information in the ChassisManager system. The most recent update to the application provides advanced visibility as to how these moves are being billed.

Ag Shippers to Meet in S.F.

The Agriculture Transportation Coalition, which hosts the largest annual gathering of ag shippers sourcing and delivering to foreign markets, will meet in San Francisco at the Hotel Nikko on June 12-14.

Among the highlights of the event will be the export compliance workshop, which will examine the final rules for export documentation. Other topics to be covered include:

- Expansion of licensing options for ag products to Cuba, Iran, Sudan, etc., but watch out for the remaining pitfalls.
- C-TPAT for exports: Are there any benefits to the ag exporter and the trucker, rail and ocean carrier handling ag cargoes? What will it cost to certify the security of your entire supply chain, from source points to final delivery overseas? Will it be voluntary?

Just Published...

Flags of Convenience

A Novel

Paul Duclos

Available Now at the Bay Crossings Store

Call 1-800-AUTHORS to order, or visit www.iUniverse.com



Stockton Marina
Design-Build



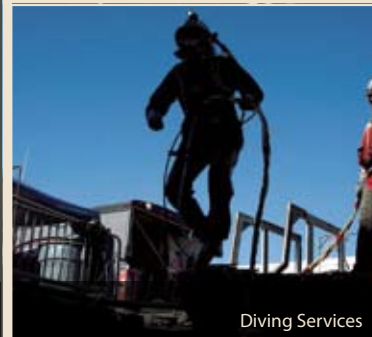
Exploratorium Museum at Pier 15



Tracy Boulevard Bridge
Seismic Retrofit



Chevron Long Wharf
Marine Engineering Construction



Diving Services

POWER
ENGINEERING CONSTRUCTION CO.

Marine Engineering Construction

MARINE • CIVIL • DESIGN-BUILD



To learn about our engineering construction capabilities, visit us at
www.PowerEngConstruction.com or call (510) 337-3800

drive on
through
to the
other side

All Electronic Tolling on the
Golden Gate Bridge
No stopping. Ever. Trippy.

www.goldengate.org/tolls 511



Engineer Earl Brown

BY MATT LARSON

Blue & Gold Fleet's Mare Island facility opened its doors in 1997 with a crew of just three. Earl Brown is one of the original few and is still a Blue & Gold engineer today. His 16th anniversary on the job comes this June 2013, which will also mark his retirement. "I told myself that when I hit 65 I'd retire," said Brown. "I've got a lot of other things I want to do."

It's the variety of the job that has kept him around so long. "You never know what you're going to work on next," Brown said. "It can be cleaning a bilge one day, fixing a computer the next and everything in between: welding, hydraulics, electronics—everything on the boat." And, most importantly, he enjoys it. "I like the type of work," Brown said.

During the Vietnam War, Brown was an in-flight radar repairman and staff sergeant for the Air Force. "There are a lot of similarities to boat and plane repair, especially when the boat is moving," he said. On a ferry boat, however, "You're not getting shot at." After the war he worked for himself, repairing smaller boats for 18 years. He's

had the opportunity to take numerous vessels on some pretty epic trips. "I've taken boats to Hawaii and back, multiple trips up to Washington and down to Southern California."

Brown also got the chance to experience an Alaskan expedition on the *Klondike Express*. Some commuters may remember the *Klondike Express*, a boat that Blue & Gold leased for a year as repairs were being done on the *Vallejo*. "We took that boat all the way down the coast from Alaska," said Brown. "There were three of us from Blue & Gold—Chuck Elles, Hugo Knef and myself. It was quite a trip, let me tell you."

Along the way, they trolled through glacier bays with mini icebergs all around, they stocked up on some fresh ice and they actually made history. "We evidently broke the record for the fastest transit through Canada—from the border of Canada and Alaska down the inside passage to the continental U.S. border. I forget how many hours it took but we pretty much traveled anywhere from 18 to 35 knots all the way down."

In addition to being a Blue & Gold engineer, Brown is also a certified firefighter and works with the Crockett/Carquinez Fire Department. "I'm an engineer for them, which means I get to drive and pump water. I'm also on



Blue & Gold Fleet Engineer Earl Brown was one of the original crew that opened up the Mare Island maintenance facility in 1997.

the rescue team. I do high-angle rescue and confined-space rescue, I'm an EMT and I fight fires." Brown's list of accomplishments goes on and on.

Brown explained the experience of driving the fire truck through town. "It's pretty exciting; a high-adrenaline job. But there's a lot of lives at stake when you're going that fast in something that big," he said. "You've got to be careful going through red lights and things like that. We pretty much come to a complete stop unless we have really good visibility at an intersection."

And if all this wasn't enough, Brown is also a range officer at Richmond Rod & Gun Club. "I make sure everyone's

doing things safely," he said. "And I like to shoot target practice for competitions." In his spare time, if he ever has it, Brown enjoys sailing. He owns his own international folkboat, a popular Scandinavian design. "I like sailing all over the Bay," he said. "It's got some of the best winds in the world."

Brown was born in San Francisco and grew up in Daly City. He currently resides in Crockett with his wife, Sue, and looks forward to the next chapter of his life. He will be truly missed by his Blue & Gold comrades, and the feeling is mutual. "I'll miss the technical challenges that keep me on my toes," he said. "And I'll miss the people I work with."



Earn Your Captain's License

Maritime Institute has a course near you!
From *San Rafael* to *San Diego* or *On-Line* at your own pace.

Call Today 888-262-8020 www.MaritimeInstitute.com

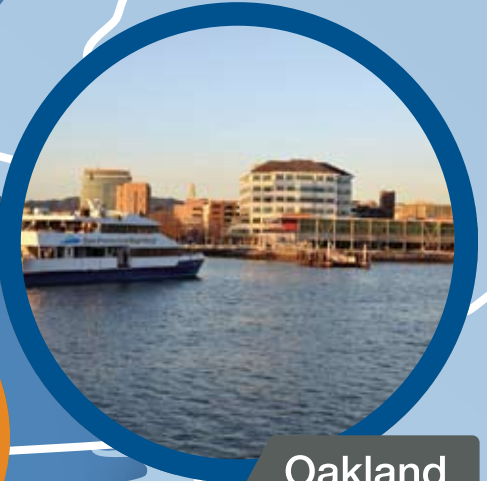
Captain's OUPV 6-Pack/Master Up to 100GT
San Diego *San Rafael*
June 3-14, 2013 July 8-19, 2013

Able Seaman
San Diego *San Rafael*
June 17-21, 2013 August 19-23, 2013

Radar Observer - Unlimited
San Diego *San Rafael*
Call for the Next Scheduled Classes

For **Work.** For **Play.**

The Easy Way to Cross the Bay.



Visit the New
Exploratorium

Vallejo

Angel Island

Oakland

Pier 41

SF Ferry Building

AT&T Park

Alameda

South San Francisco

Harbor Bay

Follow. Connect. Share.



For Ferry Route, Schedule,
Ticket and Terminal Information
www.SanFranciscoBayFerry.com
(415) 705-8291 M-F, 8AM-5PM

 **San Francisco Bay Ferry**

WETA Approves Expanded South SF Ferry Service



Photo by Joel Williams

On April 29, San Francisco Bay Ferry began to offer enhancements to its South San Francisco service, including: a new 6:20 p.m. commute option between South San Francisco and Oakland's Jack London Square and Alameda Main Street; minor adjustments to its SSF evening schedule; and a weekday leisure service between South San Francisco and the City.

The new schedule is:

From Monday through Friday, commuter service will depart at 4:20, 5:20 and 6:20 p.m. from South San Francisco to Alameda Main Street and Oakland's Jack London Square.

On Wednesday and Friday, leisure service departs from South San Francisco to San Francisco's Ferry Building and Pier 41 at 9 a.m. on Wednesdays and Fridays and returns to South City at 1:50 p.m. Wednesdays and 3:15 p.m. Fridays.

The additional commuter trip will give riders during the peak commute hours more flexibility in planning their schedules. "The addition of a later commuter service was based on

feedback from our riders who are looking for a later evening departure from South San Francisco," said Nina Rannells, executive director of the Water Emergency Transportation Authority (WETA), which operates the San Francisco Bay Ferry fleet.

"We expect this additional commuter trip will eventually increase our ridership to the levels we originally projected," she said. Peninsula Congestion Relief Alliance and Genentech shuttles also will expand their evening commute services to accommodate the later trip.

The addition of the two-day-a-week leisure service will provide transportation to some of San Francisco's most desirable waterfront destinations, including the Ferry Building, the new Exploratorium, Pier 39, Fisherman's Wharf and the historic streetcar line that runs along the Embarcadero. This limited pilot service will serve the influx of travelers and visitors during the peak tourism season, in addition to South San Francisco residents and school groups who want to take advantage of a mid-week outing to the City—without the hassle of parking and traffic.

May 9 Is Bike to Work Day

Hundreds of thousands of residents are hitting the saddle as the region gears up for the San Francisco Bay Area's 19th Annual Bike to Work Day on Thursday, May 9. Bike to Work Day encourages residents to opt for a healthier commute and experience the benefits of cycling firsthand. In addition to burning calories, bicycle commuting saves on fuel and parking costs, decreases stress and helps reduce traffic congestion, air pollution and greenhouse gases.

Bike to Work Day 2013 is presented by 511, the Bay Area's premier traveler information service, the Metropolitan

Energizer stations will be set up along popular bike routes throughout the region, rewarding veteran and novice cyclists alike with refreshments, giveaways and encouragement. Energizer stations will be open during morning commute hours and some will re-open during the evening commute. A full list of energizer stations is available at youcanbikethere.com/energizer. To plan your bike route, call 511 or visit bicycling.511.org.

Bay Area Bicyclists will also team up with coworkers, friends and neighbors for the month-long Team Bike Challenge and Company Bike Challenge competitions. Bicycle teams compete by traveling via two wheels throughout the month of



Photo by David Beaty

Transportation Commission (MTC) and Kaiser Permanente. Over the past 19 years, Bike to Work Day has put more people on the road to bicycle commuting than any other event in the Bay Area. Participants who register and pledge to ride on Bike to Work Day are also eligible to win prizes. This year's grand prize is a commuter bike from Public Bikes. To register, visit youcanbikethere.org.

Bike to Work Day 2013 is the largest of many Bay Area events happening during National Bike Month in May.

May, with each bicycle trip earning points for the team or company. Teams with the most points win prizes in various categories. Companies that promote bicycling among employees receive the benefits of healthier, more productive employees while also saving money by reducing demand for vehicle parking.

Last year, Team Bike Challenge had 4,425 registered participants on 664 teams affiliated with 245 companies. Riders racked up a total of 701,710 miles throughout the region.



IT CAME FROM BENEATH THE SEA

Moms of the Bay

BY MALLORY JOHNSON

With Mother's Day quickly approaching, it's a great time to show your appreciation for the wonderful women in your life—as well as the plentiful moms of the Bay's ecosystems.

At Aquarium of the Bay, biologists and educators are also taking a closer look at the relationships between moms of the Bay and their offspring, because the San Francisco Bay-Delta Estuary is a nursery and is home to many water-dwelling moms. It provides an important habitat in the life cycle of many animals because it is sheltered by the ocean and provides a quiet, shallow habitat for babies to grow in. On average, the Bay is only about 16 feet deep, keeping smaller, younger animals safe from larger threats.

Just like our moms have different parenting styles, so do moms of the Bay. Some may seem a little overbearing, while others prefer to take a bit less of a hands-on approach. Let's start with differences in reproductive traits. Not surprisingly, many of the animals in the Bay lay eggs. Some egg-laying moms are very protective of their offspring, while others give their eggs a bit more space.

Take the giant Pacific octopus, for

example. This mom may be the most dedicated of them all, literally giving her life for her offspring. Giant Pacific octopuses are terminal spawners, which only gives them one chance to reproduce. But what a chance—the octopus will lay anywhere from 18,000 to 74,000 eggs. Once she lays the eggs, the mother octopus does not leave their side. She sits and guards her eggs at all times for the six months it takes them to hatch, not even leaving to eat. Then, the mother typically dies shortly after her babies hatch.

Then there's the swell shark. Swell sharks lay green, flattened egg cases that are rubbery in consistency and have wiry tendrils attached to the ends. These cases are also commonly known as mermaid purses and are designed to look like kelp in order to stay camouflaged from hungry predators. After the eggs are laid, the swell shark mother uses the tendrils to anchor the egg cases in rocky, algae-covered habitats where they will be protected until they hatch, about 10-12 months later.

Not all animals in the Bay are egg-layers. Some animals, such as the sevengill shark, are ovoviviparous, meaning that they have live births. Also the Bay's largest predator, sevengills are typically found in the deeper pockets of the Bay, but female sevengills will move to more shallow waters to give birth. Once they are born, the pups stay in the shallow waters until they grow large enough to move on to



Photo courtesy of Aquarium of the Bay

Swell shark's egg cases are rubbery in consistency and have wiry tendrils attached to the ends designed to look like kelp in order to stay camouflaged from hungry predators.

deeper water. San Francisco Bay may be the primary pupping ground on the West Coast for sevengill sharks.

One of the consistencies you will see in moms of the Bay is that while many of them may spend plenty of time and care guarding and nurturing their eggs or offspring, once the babies are born or hatched, the maternal relationship typically ends. Babies of the Bay are almost

instantly left to take care of themselves.

You can learn more about moms and babies of the Bay this Mother's Day, when Aquarium of the Bay will be offering free admission for all moms and grandmothers. There will be special presentations highlighting more moms of the Bay, and visitors can even see some egg cases out on display. For more information, visit www.aquariumofthebay.org.

SUPPORT THE BAY.



Support San Francisco Baykeeper.

San Francisco Baykeeper is the pollution watchdog for San Francisco Bay. Since 1989, we have been patrolling the Bay for pollution, strengthening clean water laws, and holding polluters accountable. Baykeeper is dedicated to restoring the Bay to a healthy, thriving estuary.

We rely on the support of people like you who care about the health of the Bay and its wildlife. Visit us online at www.baykeeper.org and become a member today.



SAN FRANCISCO
BAYKEEPER
www.baykeeper.org

Pain

top-rated clinic, Financial District, friendly staff

Search

Feeling Better

www.sfacugroup.com
415 445 9388

SAN FRANCISCO
ACUPUNCTURE GROUP

Baykeeper Boat Patrols Spur Pollution Cleanup

BY DEB SELF

As we patrolled the southern San Francisco shoreline in the Baykeeper boat, we glided toward a huge facility where paint was being sandblasted off a massive ship towering above us. Paint chips blew onto our deck. Looking down, we saw a swirling film of pinkish-gray dust floating on the Bay's surface.

Geoff Potter, our volunteer skipper that day, maneuvered closer. We rocked

slightly on low waves. Baykeeper staff scientist Ian Wren hung over the boat's side as he reached down and scooped up samples of the polluted water for analysis at a lab.

We also took photos showing that the dust came from BAE, a multi-national defense contractor that repairs oil tankers, cruise ships and other large vessels at the West Coast's largest dry dock.

Lab testing of the water we collected revealed toxic heavy metals at 20,000 times the legal pollution standard. Baykeeper sued BAE, and the company quickly worked with us to identify new



Photo by Sejal Choksi-Chugh/San Francisco Baykeeper

Baykeeper patrols San Francisco Bay by boat to find and stop pollution.

pollution controls. BAE then signed a legally-binding agreement to make upgrades to the site to protect the Bay from that pinkish-gray dust and other contamination. Among the controls BAE has installed, when ships are being sanded, a giant tarp now keeps toxic paint chips and dust from blowing into the Bay.

While most people take their boats out on San Francisco Bay to find beauty, Baykeeper also sets out to find ugly. No local government agency searches for pollution from a boat in the Bay. Our small nonprofit organization has filled this role for close to a quarter-century.

"There are certain things you can only see from the water," said Robert Fairbank, another Baykeeper volunteer skipper. Currently, Baykeeper is working to stop pollution from two shoreline industrial sites that store huge piles of toxic materials outdoors. Wind and rain carry dust from those sites into the Bay. "But we couldn't see that from land," Fairbank said. "That's why it's important that Baykeeper has a boat."

In 2007, when the *Cosco Busan* oil tanker hit the Bay Bridge and spilled 53,000 gallons of oil into the Bay, we were there in our boat within hours. We reported that the spill was much larger than officials had reported and called for more cleanup resources. As the disaster unfolded, we took the media by boat

to document the damage to the Bay shoreline and wildlife, so the public could be informed.

Later, the information we'd discovered on the water helped lead to new laws requiring a faster and more effective response if oil is spilled in the Bay, and better practices to prevent oil spills. A recent example is the new rules that keep large outbound ships from passing under the Bay Bridge in heavy fog.

Baykeeper's volunteer skippers make a huge contribution to our boat patrols. They all have years of prior boat experience. Head Skipper Geoff Potter not only pilots our boat on some patrols, he handles all engine and hull maintenance and repairs, plus he selects and trains our skippers. Potter said, "I've spent most of my life on the water, and I'm really into protecting the water environment. By volunteering for Baykeeper, I get to do two things I love at once."

Several times a month, we patrol the San Francisco and East Bay shorelines, watching for signs of illegal pollution. Other days, we may cruise Raccoon Strait, looking for signs of ecological health—including the migratory birds, sharks, and marine mammals drawn by a good herring run. See you on the water, as we work to make San Francisco Bay cleaner and healthier from the Baykeeper patrol boat.



From the Sausalito Ferry, take a left, two blocks south.

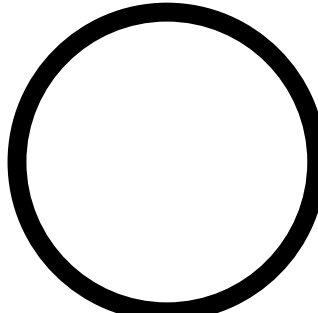
SCOMAS'S
SAUSALITO

588 BRIDGEWAY 415.332.9551 SCOMASSAUSALITO.COM

Deb Self is Executive Director of San Francisco Baykeeper, www.baykeeper.org. Baykeeper uses on-the-water patrols of San Francisco Bay, science, advocacy, and the courts to stop Bay pollution. To report pollution, call Baykeeper's hotline at 1-800-KEEP-BAY, e-mail hotline@baykeeper.org, or click "Report Pollution" at www.baykeeper.org.



*Take Bay Area
Ferries to the*

expl  **ratorium**®

The Bay Area Ferries welcome the Exploratorium to their new waterfront location at Pier 15. Just a ten minute walk from the San Francisco Ferry Building or Pier 41



Image Courtesy of ZUM zumllc.com



San Francisco Bay Ferry

www.sanfranciscobayferry.com



www.goldengateferry.org



BLUE & GOLD FLEET
PIER 39 San Francisco

www.blueandgoldfleet.com

Exploratorium Dazzles at New Waterfront Location

On April 17, the Exploratorium reopened at its new location on Pier 15 in the heart of the revitalized San Francisco waterfront, radically improving access to visitors from all over the world and dramatically enhancing the size and scope of the museum.

With three times more space overall than its previous home at the Palace of Fine Arts, the new Exploratorium will engage the curiosity and creativity of visitors of any age as they explore 150 brand-new exhibits amongst more than 600 that will be on view. For the first time, the Exploratorium expands its investigations into the Bay, City, and outdoor landscape.



The popular Recollections exhibit is a colorful, dazzling projection which lets visitors create vivid, full-size, time-delayed images of themselves. Visitors move about in dance-like motion to create dozens of time lapse and computer generated personal silhouettes. Combining computer technology, a color camera, a large screen projector and a special retro-reflective screen, artist Ed Tannenbaum has created an environment that explores time and motion in beautiful colors.



A topographic relief map of the San Francisco Bay Area becomes a projection surface for the display of visual data, offering different perspectives on the region. Presentations will include: a 40-year history of earthquakes; an animation of the fluctuating salinity of bay water in response to tides and rainfall; 24-hour fog patterns for winter and summer; and population distribution according to age and ethnicity.

The Exploratorium, founded in 1969 by physicist and educator Frank Oppenheimer, is regarded as the world's foremost interactive science museum, designed to make natural phenomena and the world around us both exciting and understandable. A pioneer in exhibit design and global leader in informal learning, the Exploratorium has been described as a mad scientist's penny arcade, a scientific funhouse and an experimental laboratory all rolled into one. Hundreds of hands-on exhibits inspire the curiosity and creativity of visitors of all ages.

As the global leader in informal learning—an approach that encourages learning outside the classroom—and the world's most experimental museum, the Exploratorium will make use of the remarkable new space to push the boundaries once again. For the first time in 44 years, the signature Exploratorium

exhibits will be featured outdoors, taking advantage of the City and Bay to encourage visitors to observe and engage in their environments like never before.

The indoor and outdoor spaces are divided into six main galleries: Human Behavior, Seeing Listening, Living Systems, Tinkering Studio, Observing the Landscape and the Outdoor Gallery.

Visitors will be able to experience their own storm by adjusting the frequency, size and velocity of raindrops (umbrella highly recommended), step into the mobile *Camera Obscura* and see an upside-down world before them, and interact in real-time with invisible life—teeny-tiny plankton that produce almost half the oxygen we breathe. The site will feature the Bay Observatory, an all-glass building. The Fisher Bay Observatory Gallery and Terrace, on the second level, is for viewing the waterfront and the City, designed to

allow visitors to explore the science of the Bay, the landscape, and the human impacts that have shaped the Bay Area. The new Exploratorium will also offer 1.5 acres of free public space—a part of the Outdoor Gallery, for visitors to enjoy the views and play with participatory exhibits tied to the surrounding environment.



The Icy Bodies exhibit features thin shavings of dry ice injected onto the surface of a shallow pool of water, where they careen around like comets while side-lighting highlights the detailed structure of the out-gassing jets.

The new facility will also feature the Seaglass restaurant, a 200-seat waterfront restaurant located at the end of Pier 15 offering stunning views of the Bay and the Bay Bridge. The menu caters to a wide range of palates, pairing local seafood with innovative cuisine. Diners will be able to experience unique exhibits within the restaurant, including the innovative *Icy Bodies*, an artwork by Exploratorium artist Shawn Lani in which fragments of dry ice spin like comets across a sheet of water below the glass-topped bar. While catering primarily to museum guests, the public is also able to access the restaurant from an exterior entrance.

The 330,000 square-foot indoor/outdoor project is also designed and constructed with the goal of becoming the largest net-zero energy museum in the United States, if not the world. True to the spirit of the Exploratorium and the nature of net-zero, achieving such an ambitious degree of energy-efficiency will require monitoring and tinkering over time. The entire undertaking will be a real-time educational exhibit, with live energy use and photovoltaic production data on public display.

Along with the move, the Exploratorium will expand its programming and remain



Exploratorium visitors have an open-ended experience creating simple circuits using a variety of available electrical components.

open late two nights a week. Wednesday it is open to the public from 10 a.m. to 10 p.m., and Wednesday evenings will feature cinema screenings for local, adult audiences that incorporate live performances, demonstrations, and discussions on the moving image.

And for those who want to experience

this exuberant learning laboratory amongst other adults, the Exploratorium will be open exclusively to the 18 and older crowd on Thursday evenings for After Dark, from 6 to 10 p.m. Thursday evenings will host a rotating schedule of programs ranging from intimate interviews to exuberant first Thursday explorations of science and culture. Cash bars will operate both Wednesday and Thursday nights.

The opening of the new Exploratorium was one of the most highly anticipated events of the year. With the move to the new site, the world-renowned Exploratorium will attract even more visitors of all ages to play, observe and discover while soaking in the beauty of the Bay and cityscape. But as always, exhibits will retain the familiar homemade, authentic quality for which the Exploratorium is famous.

Admission is \$25 for adults, with lower rates for Bay Area residents, youth, seniors, students, teachers and the disabled. In order to minimize lines and avoid overcrowding, all tickets through September 2013 will feature timed entry, so advance ticket purchases are strongly recommended through their website at www.exploratorium.edu.



The Exploratorium's Seaglass restaurant is a 200-seat waterfront restaurant at the end of Pier 15 with an exterior entrance accessible to the public. Photo by Gayle Laird © Exploratorium, All rights reserved.

All exhibit photos by Amy Snyder © Exploratorium, All rights reserved

ART FOR THE EAR

BY CAPTAIN RAY

We often hear “only in San Francisco” applied to many of the Bay Area’s people and events: the Bay to Breakers foot race/festival of ingenuity and/or nudity; the ever-evolving Haight/Ashbury community; the Folsom Street Fair; and the Sisters of Perpetual Indulgence. This part of the planet has a well-deserved reputation for being quirky. I’d like to introduce you to another of San Francisco’s quirky but little known artworks.

It has been described in many ways: a “wave-activated sound sculpture,” a “percussive force” and an “aural arrangement”; but the description I like best is the one applied by its designer. He, Peter Richards, calls it “an environmental symphony.” The Lonely Planet rates it number 222 out of 1,047 things to do in San Francisco and TripAdvisor ranked it number 115 out of 322 attractions in San Francisco. If it were not for the abundance of the aforementioned “only in S.F.” attractions, it would have a much higher rank!

This unique object is the Wave Organ, and it all began when Peter Richards, then the senior artist-in-residence at the Exploratorium, heard recordings of the

sounds coming out of a vent pipe on a floating dock. Bill Fontana, an artist in Sydney, Australia, had recorded them. When Richards heard them, an idea was born. With a planning grant from the National Endowment for the Arts, Richards explored and developed the concept. In collaboration with master stone mason and sculptor George Gonzales and as part of the New Music ‘81 Festival, a simple prototype was installed.

While the project was not yet fully formed, the support and enthusiasm for this prototype spurred the quest for a permanent installation. Frank Oppenheimer, the founding director of the Exploratorium, led the efforts for funding and permits. Work did not begin until more than six months after Oppenheimer’s death. Construction of the current exhibit took nine months. Richards and Gonzales used beautifully carved granite and marble stones that came from the razed Laurel Hill cemetery. In June of 1986, the completed Wave Organ was dedicated to the memory of Frank Oppenheimer.

So. . . Where (and what) is this experience?

The where question is easy to answer. It is located on the very eastern tip of the spit of land that encloses the San Francisco Yacht Harbor. It’s a 15-minute walk from the Palace of Fine Arts, which was (until its very recent move to Pier 15) the home of the Exploratorium. Just



Photo by Joel Williams

The Wave Organ is a wave-activated sound sculpture located at the end of Yacht Road, past the Golden Gate Yacht Club at the east end of the spit of land that encloses the San Francisco Yacht Harbor.

walk past the St. Francis Yacht Club and Golden Gate Yacht Club, all the way to the end; there you are.

The answer to the what question is a little harder. In addition to the intricately carved cemetery stones, there are 20 or more concrete pipes with their lower ends in the Bay waters and their upper ends open in various locations about the space. Sit, put your ear to a pipe, and listen. Then move to another, and then another. Each pipe offers a different serenade: one gulps and snorts, another bleeps and blips. They gurgle and sputter, moan and groan, spit and hiss, crash and then go almost silent—and

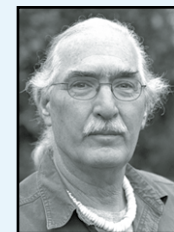
they never sound the same twice.

The location of the Wave Organ appeals to more than just your sense of hearing. While you’re listening, breathe deeply and inhale the spicy aroma of the chaparral plantings and the salty tang of the sea. Open your eyes and take in the view, from the Golden Gate Bridge and the Marin headlands to Angel and Alcatraz Islands, the hills of San Francisco and the East Bay, with the top of Mt. Diablo beyond.

Stop, take a walk, and take some time to listen to the Bay as uniquely presented by the Wave Organ.

Indeed... Only in San Francisco!

Ray Wichmann, is a US SAILING-certified Ocean Passagemaking Instructor, a US SAILING Instructor Trainer, and a member of US SAILING’s National Faculty. He holds a 100-Ton Master’s License, was a charter skipper in Hawai’i for 15 years, and has sailed on both coasts of the United States, in Mexico, the Caribbean, and Greece. He is presently employed as the Master Instructor at OCSC Sailing in the Berkeley Marina.



**PIER 39
SF MARINA
SOUTH BEACH**
NOW SERVICE IS AVAILABLE
**TUESDAYS &
THURSDAYS**

Effortless MOBILE PUMP-OUT SERVICE

REGULAR SERVICE | MAINTENANCE | REPAIR



KEEP THE BAY CLEAN WITH

BayGreen™
MARINE SANITATION



www.baygreen.com | service@baygreen.com | 415-621-1393

ORACLE TEAM USA launches second AC72

In late April, ORACLE TEAM USA officially launched the team's second AC72 from the team base at Pier 80 in San Francisco. Helmsman Jimmy Spithill led the team and audience in a toast after Oracle Chief Marketing Officer Judy Sim broke a bottle of champagne across the bowsprit. The boat was then lowered into the San Francisco Bay before docking out for the first time.

"It's an awesome day. We're all very, very excited to get it out on the water," said Spithill. "We hope to develop the fastest AC72 that will hit the Bay. There's been a lot of energy, a lot of hours, put into this boat from the entire team. Now, it's up to the sailors, along with the support of the rest of the team, to get out there and really try to get the most out of this boat."

Spithill recognized the months of work put into the design and build of the boat in preparation for launch. "We have the best, most committed shore team, build team, design team, and the entire team is behind us, supporting us," he said.



Photo by Joel Williams

At over 131 feet high, the ORACLE TEAM USA 17 towers over the team base at Pier 80 as they ready for launch. This is the AC72 boat that will defend the America's Cup in September 2013.

"They're the first to arrive, the last to leave, working seven days a week just to provide us with a reliable, race-winning boat, ready to go."

Named ORACLE TEAM USA 17, the boat is the second AC72 launched by ORACLE TEAM USA and marks the start of the next phase in the team's campaign.

Training commences on the new boat this week, and by late spring the team plans to have both AC72s on the Bay as they prepare to defend the America's Cup this September.

"There's been an enormous amount of work that has gone into this boat," said CEO Russell Coutts during the launch. "It represents extreme performance and extreme engineering. It represents a significant improvement in performance over where we've been before. And probably most importantly, this represents the boat that is going to defend the America's Cup, for America, in America."

The event included remarks from San Francisco Mayor Ed Lee, who noted that this is a week of celebration as the Port of San Francisco marks its 150th anniversary tomorrow.

Bay Area native and ORACLE TEAM USA tactician John Kosteki described the thrill of sailing on the San Francisco Bay. "We're going fast, probably faster than a car on the Golden Gate Bridge," Kosteki said. "Upwind we're doing speeds of around 20 knots, downwind we're doing speeds over 40 knots. It's really going to be interesting to take into account the ever-changing current and winds here on the Bay. That's what keeps San Francisco an interesting and exciting place to race sailboats because it's always different every day."

The day's sailing session was cut short as winds were blowing above 20 knots. The team plans to be back out on the



Photo by Joel Williams

Oracle Chief Marketing Officer Judy Sim christens the second AC72 breaking a bottle of champagne across the bowsprit at the official launching ceremony in April.

water later this week.

"It's all coming together," said trimmer Joey Newton. "It was a tough time after the capsizing, and we felt like we were a little behind the other teams, and I think

we were. Now, it really feels like we have everything pointed in the right direction, and we're starting to make pretty big steps. We've got high hopes for this boat, and I'm sure it's going to be fast."



Sausalito

Come for the Day...Stay for the Weekend!





May Events

- 4-5 Marin Open Studios, 11 am-6 pm
ICB Building, Schoonmaker Artists, Studio 333 & Sausalito Artists
- 17-19 Sausalito Film Festival
Cine Arts, Caledonia Street & Cavallo Point, Fort Baker, sausalitofilmfestival.com
- 26 Caledonia Street Festival, 11 am-6:30 pm
Caledonia Street, caledoniastreetfestival.com

Late Night Ferry Service
Last Blue & Gold Ferry from Sausalito to SF at 9:40 pm on Friday nights through October 27th.

Download
Visit
Sausalito
mobile app

Call the Sausalito Chamber of Commerce 415-331-7262
or visit www.sausalito.org for more information





City Program Improves Recycling Practices One House at a Time

BY BILL PICTURE

Though it began nearly four years ago, many San Franciscans had never even heard of the City's Environment Now green jobs training program until last month. That's when Mark Boyer, a reporter from *The Atlantic Cities*, shadowed

Environment Now trainees dispatched into neighborhoods before sunrise to sift through waste bins. The trainees collect data on how San Francisco households and businesses separate their recycling, compost and landfill-bound waste.

Environment Now outreach crews later use this data to go door-to-door, making a special effort to hit those addresses whose sorting could use some work. There, they educate the owners and



SF Department of the Environment

Most Environment Now trainees are graduates of other green-jobs workforce training programs offered by the City and have been referred on to Environment Now because they showed a keen interest in sustainability. Going door-to-door, they educate owners and tenants about proper sorting and answer questions.

tenants about proper sorting, answering questions and reinforcing the important role that each household and business plays in helping the City to meet its goal of being a zero-waste city by 2020.

"Nowadays we look at going door-to-door as being an aggressive tactic, but back in the day it was the preferred means to engage the public," said Environment Now Coordinator Cara Gurney. "Vacuum salesmen and encyclopedia salesmen went door-to-door because it allowed them to put a human face on their product."

The truth is, figuring out whether to deposit that scrap-of-whatever in your hand into the blue bin, the black bin or the green bin can sometimes be tricky business. And while every effort has been made to help the public with the process, most people still at some point find themselves standing in front of the three bins scratching their heads, then tossing the item into a bin and hoping for the best. "That's why going door-to-door is so effective," Gurney said. "We can answer questions and have a conversation. It's more human, and more effective than any brochure."

A landing spot for many types of people

Most Environment Now trainees are graduates of other green-jobs workforce

training programs offered by the City and have been referred on to Environment Now because they showed a keen interest in sustainability.

But that's pretty much the only thing that the trainees have in common. The team, which typically ranges from 15 to 20 paid participants—the program is funded through the City's Public Trainee Service program, and trainees are paid a living wage for a 40-hour week—spans just about every age, race and socio-economic demographic.

"And given the fact that we're knocking on people's doors, it's important that our team reflect the diversity of the community," Gurney said. "If someone knocks on your door, you're more likely to listen to what they have to say if you share some common ground, for instance, they're from the same neighborhood as you or speak the same language. Oh, we also speak multiple languages."

While trainees tend to skew younger, Gurney said Environment Now frequently has participants over age 55. "The younger people are coming from other job training programs," she said. "The green workforce is still a relatively new thing, and they want to be a part of it. For the older folks, it's a transition—an opportunity to find a new career or a different career that mirrors their interest in sustainability and the environment."

The Comedy Circuit presents

THE ONE FULL BEARD TOUR

It's a **Stand-up Comedy Show...**
in **Vallejo!**

Fri 17TH & Sat 18TH!
May 2013
8pm
\$10/gen • \$5/student

Starring

KEITH LOWELL JENSEN



Celebrating his 2013 Comedy CD release on **Stand Up! Records.**

AND FEATURING
JOHNNY TAYLOR



held at the

FETTERLY PLAYHOUSE

(Directions online)

Tickets & info available at

VallejoComedy.com

707.290.6995





Gurney says she's also noticed a lot more women coming into the program lately.

"Environment Now is a landing spot for all types of people," she said. "Either way, they're interested in what we're doing, and we want to carry that interest forward."

Responses to Environment Now's door-to-door canvassing vary, according to Gurney. Overall, however, she says team members tend to be well received. "We definitely have more conversations with people than we have doors shut in our face," she said. Gurney described a Russian family whose door she once knocked on:

"They didn't speak any English at all but they invite me in and tried to feed me dinner. I couldn't stay, but we did talk for quite a while about recycling and composting through charades."



SF Department of the Environment

Environment Now trainees move through San Francisco neighborhoods before sunrise, sifting through waste bins collecting data on how households and businesses separate their recycling, compost and landfill-bound waste.

Getting the Environment Now message across in the face of unusual circumstances like this is something that trainees are well equipped to do, Gurney said, thanks to a training program that includes plenty of role-playing, to help trainees negotiate a myriad of questions, and stay on-message.

"And once the discussion is rolling, we'll go wherever we can go," she said.

"We'll include reduction, energy saving. Wherever we can go, we'll go there."

More difficult to overcome than any language barrier or crotchety neighbor's bad attitude, Gurney said, has been the relative inability to measure the program's impact on the City's waste diversion rates. "It's easier with businesses because we give them a green bin; and the numbers change pretty drastically. With residential, the change is usually more subtle."

Still, there's good evidence that Environment Now works. Two years ago, a campaign focusing on the Bayview neighborhood resulted in a 30 percent increase in diversion rates.

Bigger bang behind locked gates

Next on Environment Now's to-do list is multi-family buildings, which means working with property managers to gain access beyond building security doors. "We have to connect with the managers and get them to allow our team to come in and chat with the tenants. It takes a little bit longer, but it's worth the investment. Because of the amount of waste generated at one building, you're talking about more bang for the buck," Gurney said. "We also want to increase our community presence and start engaging more community groups in our messaging."

That said, the core strategy will remain much the same. "Once we get into those buildings, it's all about the face-to-face," Gurney said. "It's the best tactic. They're genuine interactions, and they help get people invested in the notion of recycling and composting. That investment, conveying the understanding of why this is important—that's the first step in any behavioral change."

For more information on Environment Now, visit www.sfenvironment.org.

PROTECT THE BAY

WATER QUALITY... YOU CAN MAKE A DIFFERENCE!



By using this **FREE bilge pad**, you can do your part to protect our Bay.

Even a little oil goes a long way toward damaging our oceans, bays, rivers and lakes. As boaters, there's a lot we can do to stop pollution. A big step is simply preventing our engine oil from leaking into the water.



Bilge pads and disposal cans are available at participating marinas in the City of Alameda.

TO LEARN MORE ABOUT "CLEAN BOATING",
PLEASE VISIT...

WWW.COAST4U.ORG

AND SELECT THE
"BOATING CLEAN & GREEN" LINK



City of Alameda
**Public Works
Department**
Public Works Works for You!

PLEASE CALL THE CITY OF ALAMEDA'S
PROGRAM ADMINISTRATOR
FOR MORE INFORMATION:
(510) 747-7930

May Brings Spring Excitement to Jack London Square

Don't miss the chance to enjoy Jack London Square's bustling waterfront with a packed calendar of outdoor events. The month of May offers something for both visitors and locals including night markets, classic car shows, culinary delights, crafting extravaganzas, Mother's Day brunch and much more!

May kicks off with the return of Jack's Night Market on Friday, May 3 from 6 p.m. to 10 p.m. Market-goers will delight in a captivating evening on the waterfront filled with merriment and verve. This vibrant outdoor bazaar will light up the Square with an eclectic mix of artisans, music and street performers, as well as a selection of tasty treats, street food, beer and wine. All beer

and wine sales from Jack's Night Market benefit the Sustainable Business Alliance and Oakland Grown.

The fun continues on Sunday, May 12, with the Patchwork Indie Art & Craft Festival featuring local emerging artists, crafters and designers showcasing a variety of handmade goods including art, knits, clothing, paper goods, accessories, housewares and more. Attendees can even get in on the crafting action with a free DIY crafting station. The Patchwork Indie Art & Craft Festival will also feature local food producers, musicians, book signings and more—all taking place in the Jack London Square Pavilion.

Mother's Day is Sunday, May 12 and Jack London Square is a great place to bring

mom for brunch on the waterfront, followed by an exciting day of biking, kayaking, walking the shoreline or climbing aboard the USS *Potomac*.

From car buffs to casual enthusiasts, the waterfront will transform into an auto mecca on Saturday, May 25 for the Rod & Custom Car Show. The Square will be filled with vintage vehicles from the 1920s to 1960s that will turn heads including rare Model As, Roadsters and Thunderbirds.

With summer around the corner, LES MILLS is the perfect place to get fit and have fun on Wednesdays between 6:30 p.m. and 7:30 p.m. Instructors will offer a variety

of free classes including dance, strength, martial arts, mind/body and more.

In addition to all the waterfront events, Jack London Square visitors can dine at a variety of contemporary restaurants including Bocanova, Forge Pizza, Haven, Lungomare and more. Visitors can easily bike, ferry or drive to Jack London Square, which offers parking and valet for bikes and vehicles. For additional information, visit www.jacklondonsquare.com.



The Rod & Custom Car Show comes to Jack London Square on May 25.

MAY 3 · JUNE 7 · JULY 5 · AUGUST 2 · SEPTEMBER 6
CELEBRATING OAKLAND FIRST FRIDAYS

JACK'S NIGHT MARKET

OAKLAND CRAFTS, ARTISANS AND DESIGNERS
 LOCAL PRODUCERS - VEGETABLES, FRUITS
 FOOD, GOODIES AND LIBATIONS
 ECLECTIC SHOPPING BAZAAR
 QUIRKY PERFORMERS

ENJOY A CAPTIVATING EVENING
 FILLED WITH MERRIMENT AND VERVE
www.jacklondonsquare.com






ON THE WATERFRONT AT
 JACK LONDON SQUARE

Dancing, Running, Racing

BY PAUL DUCLOS

The San Francisco Ballet will present the U.S. premiere of Christopher Wheeldon's *Cinderella* this May. Co-produced by SF Ballet and the Dutch National Ballet, *Cinderella* had its world premiere in December 2012 with the Dutch National Ballet performing at the Amsterdam Music Theatre. The production was met with rave reviews—the *Financial Times* called it “a triumph of storytelling and stage design firmly in touch with the 21st Century.”

Set to the music of Sergei Prokofiev, Wheeldon's interpretation combines parts of both the Charles Perrault and Brothers Grimm versions, along with some new elements. In this *Cinderella* there is no fairy godmother, pumpkin coach, or clock striking midnight. Rather, Wheeldon provides us with a magical tale of another sort—one that is stunningly visual and deeply moving. Wheeldon gives depth to the story's characters by portraying Cinderella as more in charge of her destiny than she is traditionally depicted, and the prince plays a bigger role than in other productions.

We see both characters as young children and glimpse Cinderella's life before her mother dies. And, in this adaptation, Cinderella plants a hazel branch on her mother's grave. Watered by Cinderella's tears, the branch grown into an enormous magical, dancing tree that, along with four spirits, watches over Cinderella and grants all her wishes.

“This *Cinderella* is different from other ballet versions of the story,” said Wheeldon. “We've combined elements of the Grimm and Perrault versions of the tale and added some of our own—the production is comical, romantic and theatrical. We want to take audiences on a magical journey.”

“Wheeldon created the choreography for *Cinderella* in an unusual way—part of the choreography was created in San Francisco and part in Holland. In

creating a world for his characters to inhabit, Wheeldon assembled an artistic team with imaginations as big as his own. The libretto is written by Craig Lucas, a renowned playwright, director and screenwriter who began his career as an actor. Among other awards, Lucas was nominated for Broadway's 1990 Tony Award as author of Best Play nominee *Prelude to a Kiss* and again in 2005 for the book *Light in the Piazza*.

The approximate running time for *Cinderella* is two hours and 33 minutes.

Running

The running time for another May event may take a bit longer for most participants. Bay to Breakers is now part of the “San Francisco Originals” run series—which also includes the San Francisco Marathon, the San Francisco Giant Race, and the Oral B Glide Floss Bridge to Bridge Run.

This “San Francisco Originals” run series is a joint venture to celebrate all that is admirable about San Francisco and its famed running traditions. Each race takes runners on a visual tour of San Francisco—through eclectic neighborhoods, scenic parks and along waterfront trails. The first 2,500 athletes who register and complete in all four iconic running races this year will receive a commemorative medal acknowledging this truly San Francisco athletic accomplishment.

Interested participants are encouraged to register now, to make the commitment to all four races, and start training. Beginning with the city's oldest footrace, the 102nd Bay to Breakers 12K race will warm things up on Sunday, May 19; followed by the Wipro San Francisco Marathon on Sunday, June 16; then on to the San Francisco Giant Race on Sunday, August 4. The series will wrap up with the Oral B Glide Floss Bridge to Bridge Run on Sunday, October 6.

Running

For those who would prefer to watch other animals race, there's always Golden Gate Fields this May, where the “Run For

the Roses” can be viewed from the comfort the tracks' storied turf club.

While sipping a mint julep and wagering on local contests, patrons can engage in convivial conversation with scores of beautiful women wearing gorgeous hats fashioned for the occasion.

GGF recently abandoned its plan for “Bottomless Saturdays,” which would have permitted adults to drink unlimited amounts of wine, beer, and spirits for \$30. If the venue is ever to feature scheduled ferry service, this idea might be revisited. The “sport of kings” deserves such a

designated driver alternative.

<http://www.goldengatefields.com>

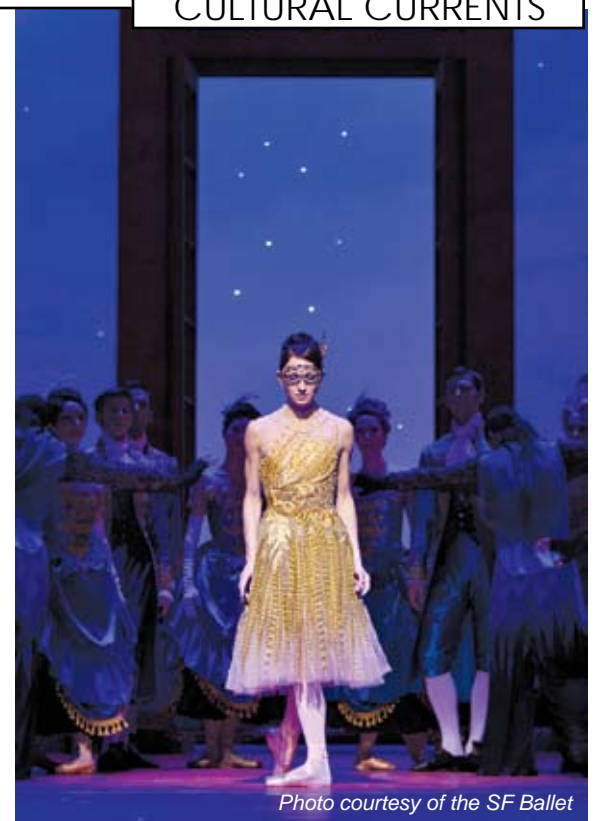


Photo courtesy of the SF Ballet

The San Francisco Ballet will present the U.S. premiere of Christopher Wheeldon's *Cinderella* in May.



Scoma's Restaurant

Fisherman's Wharf

Pier 47 on Al Scoma Way

415-771-4383

www.scomas.com

WATERFRONT ACTIVITIES

- Every Wednesday** **6PM – 8PM – Wednesday Night Sailing - OCSC Sailing, Berkeley, 510-843-4200, www.ocscsailing.com**
Enjoy a relaxing evening on the Bay! Set sail on one of our larger yachts skippered by a professional OCSC skipper, followed by chowder, chili, chips & salsa, and beverages from 8 – 9:30 PM in our club room. Cost: \$60 Retail, \$45 Members
- May 4** **6:30PM – 9PM – Sunset Paddle - Outback Adventures, Larkspur, 415-461-2222, www.outbackadventures.com**
Navigating your kayak across tranquil waters as the sunsets behind Mt Tam is a mystical experience you won't soon forget. This unique kayak tour allows for a spectacular vantage point of the sun setting into the night's sky. We will paddle leisurely while admiring the yellow and reds of the sun's last light reflecting off the water's surface. (\$55 per person 2.5 hour tour)
- May 5** **10AM – 2PM – Kayak Basics - California Canoe & Kayak, Oakland Estuary, 800-366-9804, www.calkayak.com**
Are you ready to try kayaking? Maximize your fun on the water! This 4 hour class emphasizes basic water safety using recreational kayaks. You will learn the basic paddle strokes and fundamental kayak maneuvers in a calm water setting. Class fee includes kayak, paddling gear, and a coupon for 50% off a future kayak rental (one hour)! Cost: \$59
- May 9** **7PM – 9PM – Kame Richards on SF Bay Tides and Currents - OCSC Sailing, Berkeley, 510-843-4200, www.ocscsailing.com**
Ever wonder what that brown frothy water means near Angel Island or TI? Come to hear the leading expert on San Francisco Bay tides and currents. You never look at the Bay in the same way again! Cost: Free for OCSC Members, \$25 Retail.
- May 10** **6PM – 8:30PM – Sunset Sail - Call of the Sea, Sausalito, 415-331-3214, www.callofthesea.org**
Climb aboard the classic schooner *Seaward* and see San Francisco from the water! Take in an unmatched view of the city front as you sail by famous San Francisco sights such as the Golden Gate Bridge, Alcatraz, and Angel Island. You can sit back and enjoy the view, or get involved in sailing the schooner with the help of our professional crew. Complimentary wine, cheese, and light refreshments will be served. A relaxing way to end the week! Cost is \$50 per passenger.
- May 15** **6PM – 8PM – Women's Wednesday Night Sail! - OCSC Sailing, Berkeley, 510-843-4200, www.ocscsailing.com**
Join the all-women's Wednesday Night Sail boat skippered by OCSC GM Alicia Witham. Followed by chowder, chili, chips & salsa, and beverages back on shore in our club room. Cost: \$45 OCSC Members, \$60 Retail.

Waterfront Adventures is an advertising sponsored section for activities on or around the water in the Bay Area. If you are interested in having your events or activities listed in this section contact Joel Williams at joel@baycrossings.com.



OCSC SAILING
Inspire Confidence™

The School Sailors
Recommend if You
Want to Become
Confident

Call or Click | FREE BROCHURE
800.223.2984
www.OCSC.com



OUTBACK
ADVENTURES

Tours - Classes - Sales - Rentals

Now Offering
Stand Up Paddleboarding

outbackadventures.com – 415.461.2222

WATERFRONT ACTIVITIES

- May 19** **9:30AM – 2:30PM – Tomales Bay Tour - Outback Adventures, Larkspur, 415-461-2222, www.outbackadventures.com**
Come experience one of the premier paddling destinations in California on this guided kayak tour! Wildlife abounds in this spectacular setting, one of the largest protected bays and coastal area in California. Half way through our paddling tour we will stop on a secluded beach only accessible by small water craft and eat lunch. (\$85 per person 5 hour tour)
- May 24** **6PM – 8:30PM – Full Moon Sail - Call of the Sea, Sausalito, 415-331-3214, www.callofthesea.org**
Watch the full or nearly full moon rise from the deck of our 82' schooner, *Seaward*, as you take in the sights of San Francisco Bay. There isn't a more beautiful way to enjoy a moonlit evening. Complimentary wine, cheese, and light refreshments will be served. Take advantage of this special opportunity that only happens a few times per year - and don't forget your sweater! Cost is \$50 per passenger.
- May 24** **6:30PM – 9:30PM – Moonlight Kayaking at Jack London Square - California Canoe & Kayak, 800-366-9804, www.calkayak.com**
Moonlight paddling is enchanting! The water is calm and glassy on the Oakland Estuary and the city lights add to the ambiance. We enjoy a leisurely pace as the sun sets and the moon rises, illuminating a delightful evening. Cost: \$49
- May 25** **9AM – 11AM – Outboard Motor Operation 101 - OCSC Sailing, Berkeley, 510-843-4200, www.ocscsailing.com**
Is your outboard motor a mystery to you? Do you shy away from using the dinghy when you're on a bareboat vacation? Come and learn the ins-and-outs of outboard motor operation. Cost: Free for OCSC Members, \$25 Retail.
- May 25** **11:30AM – 2PM – Stand Up Paddle Boarding - Outback Adventures, Larkspur, 415-461-2222, www.outbackadventures.com**
Come join Outback Adventures and learn why Stand Up Paddle Boarding is one of the fastest growing paddle sports in the industry. Learn paddle technique and get an opportunity to try many different kinds of board we will practice the skills in the protected waters of the Corte Madera Creek, no experience necessary. (\$60 per person 2.5 hour class)
- May 26** **9:00AM – Noon – Stand Up Paddleboarding 101 - California Canoe & Kayak, Oakland Estuary, 800-366-9804, www.calkayak.com**
Give Stand Up Paddling a try in our introductory SUP class. SUPing has become incredibly popular in a few short years because it's so fun, easy, and another GREAT way to get on the water. (It's good for you, too.) No previous paddling or surfing experience is necessary. This 3-hour session in the sheltered water of the Oakland Estuary will get you started, and you'll be cruising in style in no time. Our SUP boards are great for novices – and great for rentals, too, once you've completed the class. Cost: \$60

Waterfront Adventures is an advertising sponsored section for activities on or around the water in the Bay Area. If you are interested in having your events or activities listed in this section contact Joel Williams at joel@baycrossings.com.

California Canoe & Kayak
Jack London Square
409 Water Street
Oakland, CA 94607
510-893-7833
open 10 to 6

calkayak.com

Sales - Rentals - Classes - Trips
Kayaks - Canoes - Stand-up Paddle Boards



SAIL THE SCHOONER SEAWARD!


Public Sunset
Sails with wine & cheese most Friday evenings.

Public Family Adventure Sails
most Sunday mornings.

Port: Bay Model Visitor Center in Sausalito

Cost: Adults \$50, Youth (6-12) \$25, Children (under 6) free

 A 501 (c)(3) nonprofit educational organization. **To register visit www.callofthesea.org.**



All Bay Area Ferry Schedules in One Place!

Golden Gate Ferry

LARKSPUR*

Weekdays (excluding Holidays)				Weekends and Holidays			
Depart Larkspur	Arrive S.F. Ferry Bldg.	Depart S.F. Ferry Bldg.	Arrive Larkspur	Depart Larkspur	Arrive S.F. Ferry Bldg.	Depart S.F. Ferry Bldg.	Arrive Larkspur
5:50 a.m.	6:20 a.m.	6:25 a.m.	6:55 a.m.	9:40 a.m.	10:30 a.m.	-----	-----
6:35	7:05	7:10	7:40	11:40	12:30 p.m.	12:40 p.m.	1:30 p.m.
7:10	7:40	7:45	8:15	1:40 pm	2:30	3:45	4:35
7:50	8:20	8:30	9:05	4:45	5:35	6:25	7:15
8:20	8:50	9:10	9:45	-----	-----	7:25	8:10
9:15	9:50	10:10	10:45				
10:10	10:45	10:55	11:30				
11:10	11:45	11:55	12:30 p.m.				
11:40	12:15	12:25	1:00				
12:40 p.m.	1:15 p.m.	1:25 p.m.	2:00				
2:15	2:50	3:00	3:30				
2:50	3:25	3:35	4:05				
3:40	4:15	4:25	4:55				
4:15	4:45	5:00	5:30				
-----	-----	5:20	6:05				
5:05	5:40	5:55	6:25				
5:40	6:15	6:25	6:55				
6:35	7:10	7:20	7:50				
7:25	8:00	8:10	8:40				
8:50	9:25	9:35	10:05				

One-way Ferry Fares		
	Larkspur	Sausalito
	Daily	Daily
Adult Cash Fare (19 - 64)	\$9.00	\$9.75
Clipper	\$6.00	\$5.00
Youth/Senior/Disabled	\$4.50	\$4.75
Children 5 and under (limit 2 per fare-paying adult)	FREE	FREE
Children ages 5 and under travel free when accompanied by a full fare paying adult (limit two youth per adult).		

* Direct ferry service is provided to all Giants games at AT&T Park. Special service is provided to various concerts and the Bay to Breakers Race. On weekdays, with the exception of the 5:20pm San Francisco departure which uses a high-capacity Spaulding vessel, all other trips use high-speed catamarans. Weekend service is provided by a high-capacity Spaulding vessel.

SAUSALITO

Weekdays (excluding Holidays)				Weekends and Holidays			
Depart Sausalito	Arrive S.F. Ferry Bldg.	Depart S.F. Ferry Bldg.	Arrive Sausalito	Depart Sausalito	Arrive S.F. Ferry Bldg.	Depart S.F. Ferry Bldg.	Arrive Sausalito
7:10 a.m.	7:35 a.m.	7:40 a.m.	8:10 a.m.	-----	-----	10:40 a.m.	11:10 a.m.
8:20	8:45	10:15	10:45	11:20 a.m.	11:50 a.m.	12:00 p.m.	12:30 p.m.
10:55	11:25	11:35	12:05 p.m.	12:45 p.m.	1:15 p.m.	1:25	1:55
12:15 p.m.	12:45 p.m.	12:55 p.m.	1:25	2:10	2:40	2:50	3:20
1:55	2:25	2:35	3:05	3:50	4:20	4:40	5:10
3:20	3:50	4:00	4:30	5:35	6:05	6:00	6:30
4:45	5:15	5:30	6:00	6:45	7:15	-----	-----
6:10	6:35	6:45	7:10				
7:20	7:50	7:55	8:20				

Contact Information | For the Golden Gate Ferry website, visit: <http://goldengateferry.org/>
Toll free 511 or 711 (TDD) | Comments and questions can be submitted at <http://ferrycomments.goldengate.org/>

Holiday service is in effect on Martin Luther King, Jr. Day, Presidents Day, Memorial Day, Independence Day, Labor Day, and the day after Thanksgiving Day (Sausalito). The Larkspur line operates on a Modified Holiday Schedule on the day after Thanksgiving Day.
No ferry service on New Year's Day, Thanksgiving Day, and Christmas Day.

Blue & Gold Ferry

TIBURON COMMUTE

TIBURON - S.F. Ferry Building			
Weekdays			
Depart Tiburon	Arrive S.F. Ferry Bldg.	Depart S.F. Ferry Bldg.	Arrive Tiburon
5:35 a.m.	6:00 a.m.	6:05 a.m.	6:30 a.m.
6:40	7:05	7:10	7:35
7:50	8:15	8:20	8:40
8:45	9:10	-----	-----
-----	-----	4:25 p.m.	4:50 p.m.
4:55 p.m.	5:20 p.m.	5:25	5:50
5:55	6:20	6:30	6:55
7:05	7:30	7:35	8:00

TIBURON - Pier 41

Weekdays			
Depart Pier 41	Arrive Tiburon	Depart Tiburon	Arrive Pier 41
10:10 a.m.	10:45 a.m.	10:50 a.m.	11:15 a.m.
11:20	12:00 p.m.	12:05 p.m.	12:30 p.m.
1:45 p.m.	2:10	2:15	3:20
4:10	4:50	---	---
---	8:00 pm	8:05 pm	8:45 pm

TIBURON - Pier 41

Weekends and Holidays			
Depart Pier 41	Arrive Tiburon	Depart Tiburon	Arrive Pier 41
9:45 am	10:20 a.m.	10:25 a.m.	11:20 a.m.
11:35	12:30 p.m.	12:40 p.m.	1:05 p.m.
2:00 p.m.	2:25	2:35	3:25
3:35	4:25	4:35	5:20
5:30	6:20	6:30	6:55

FARES:	One-way	Round trip
Adult	\$10.50	\$21.00
Senior (65+)	\$6.25	\$12.50
Child (5-11)	\$6.25	\$12.50
20 Ticket Commute Book \$140.00 (Mon. - Fri.)		

Holiday Schedule in effect for: Day After Thanksgiving (Nov 23), & President's Day (Feb 18) No service on Thanksgiving Day (Nov 22), Christmas Day (Dec 25), & New Year's Day (Jan 1)

BAY CRUISE

Depart Pier 39		
Weekdays	Weekends	
10:00 a.m.	10:00 a.m.	3:00 p.m.
1:00 p.m.	10:45	3:30
3:00	12:15 p.m.	4:30
4:30	1:00	5:00
	1:30	6:00

For the most current schedule, visit www.blueandgoldfleet.com
Bay Cruise does not operate during inclement weather. Additional cruises may be added on demand. Check with ticket booth on day of sailing for schedule. No reserved seating available.

FARES:	All prices include audio tour.	
Adult	\$26.00	Child (5-11) \$18.00
Junior (12-18)	\$22.00	Senior (62+) \$22.00
Discount fares available at www.blueandgoldfleet.com		

ROCKETBOAT

Daily, Monday - Sunday

Depart from Pier 39 Effective May 13, 2013	
12:00 p.m.	FARES:
12:45	Adult \$24.00
1:30	Senior (65+) \$20.00
2:45	Junior (12-18) \$20.00
3:30	Child (5-11) \$16.00
4:15	Holiday schedule on Memorial Day (May 27),
5:30	Independence Day (July 4) and
6:15	Labor Day (Sept 3)

SAUSALITO

FISHERMAN'S WHARF, PIER 41

Weekdays			
Depart S.F. Pier 41	Arrive Sausalito	Depart Sausalito	Arrive S.F. Pier 41
11:20 a.m.	11:45 am	11:50 a.m.	12:30 p.m.
12:35 p.m.	1:00 pm	1:05 p.m.	1:40
1:45	2:45	2:55	3:20
---	---	8:20	8:45

Weekends and Holidays

Depart S.F. Pier 41	Arrive Sausalito	Depart Sausalito	Arrive S.F. Pier 41
9:45 a.m.	10:45 a.m.	10:55 a.m.	11:20 a.m.
11:35	12:00 p.m.	12:10 p.m.	1:05 p.m.
2:00 p.m.	2:50	3:00	3:25
3:35	4:45	4:55	5:20
5:30	5:55	6:05	6:55

Holiday Schedule in effect for: Day After Thanksgiving (Nov 23), & President's Day (Feb 18) No service on Thanksgiving Day (Nov 22), Christmas Day (Dec 25), & New Year's Day (Jan 1)

FARES:	One-way	Round-trip
Adult	\$10.50	\$21.00
Senior (65+)	\$6.25	\$12.50
Child (5-11)	\$6.25	\$12.50

For the most current schedule, visit <http://www.blueandgoldfleet.com/Ferry/Sausalito/index.cfm>

ANGEL ISLAND - S.F.

Weekdays (Depart Pier 41)			
Depart Pier 41	Arrive Angel Island	Depart Angel Island	Arrive Pier 41
10:10 am	10:30 am	1:20 pm	1:40 pm
---	---	2:25 pm	3:20 pm

Weekends & Holidays (Depart Pier 41)

Depart Pier 41	Arrive Angel Island	Depart Angel Island	Arrive Pier 41
9:45 am	10:05 am	10:10 am	11:20 am
---	---	4:10 pm	5:20 pm

ANGEL ISLAND PRICES (Round-trip)

FARES	S.F. Pier 41 Ferry Bldg*	Alameda/Oakland*	Vallejo*
Adult	\$17.00	\$14.50	\$30.50*
Child	\$9.50 (age 6-12)	\$8.50 (age 5-12)	\$21.00 (ages 6-12)
Child	Free (5 & under)	Free (4 & under)	Free (5 & under)

* All prices include State Park Fees / Weekend Schedule on Memorial Day (May 25) / Independence Day (July 4) and Labor Day (Sept 7)

Angel Island Ferry

TIBURON - ANGEL ISLAND

Weekdays and Weekends			
Tiburon to Angel Island		Angel Island to Tiburon	
Monday - Friday		Monday - Friday	
10 a.m.	11 a.m.	10:20 a.m.	11:20 a.m.
1 p.m.	3 p.m.	1:20 p.m.	3:30 p.m.
Saturday - Sunday		Saturday - Sunday	
10 a.m. 5 p.m. hourly		10:20 a.m. 5:20 p.m. hourly	

Ferry service by advance reservation for groups of 25 or more. Call (415) 435-2131 to find out if you can "piggyback" with groups

FARES:	Round Trip	(*Limit one free child, ages 2 and under, per paying adult.)
Adult (13 and over)	\$13.50	
Child (6 - 12)	\$11.50	
Children (3 - 5)	\$3.50	
Toddlers (ages 2 and under)	Free*	
Bicycles	\$1.00	

For the most current schedule and other information, visit www.angelislandferry.com/ / Schedule Subject to change w/o notice

Bay Area Ferry Terminal Locations

Alameda Ferry Terminal
2990 Main Street

Harbor Bay Ferry Terminal
215 Adelpian Way, Alameda

Larkspur Landing Ferry Terminal
101 E. Sir Francis Drake Boulevard

Oakland Ferry Terminal
10 Clay Street @ Jack London Square

Sausalito Ferry Terminal
Humbolt Street & Anchor Avenue

San Francisco:
SF Ferry Building @ foot of Market Street
Pier 41 @ Fisherman's Wharf

South San Francisco
911 Marina Boulevard

Tiburon Ferry Terminal
Tiburon Blvd. & Main St. in Tiburon

Vallejo Ferry Terminal
289 Mare Island Way in Vallejo

Red & White

BAY CRUISE Pier 43 1/2

Monday through Sunday		FARES:
10:00 a.m.	2:30 p.m.	Adult (18+) \$24.00
10:45	3:00	Youth (5-17) \$16.00
11:15	3:45	Child (under 5) Free
12:00 p.m.	4:15	Family Pass \$69.00
1:10	5:00	(2 Adult + 4 Youth)
1:40		

Fun on Ferries, Shoreline Snacking and Shopping, Take the Kids, Bikes on Boats, Fun on Ferries...



www.baycrossings.com



San Francisco Bay Ferry

VALLEJO		
VALLEJO – SAN FRANCISCO		
Travel time between Vallejo and San Francisco is approximately 60 minutes.		
Weekdays		
Depart Vallejo to S.F. Ferry Building	Depart S.F. Ferry Bldg. to Vallejo	Depart Pier 41 Fisherman's Wharf to Vallejo
5:30 a.m.	6:35 a.m.	-----
6:30	7:35	-----
7:00	8:30	-----
7:45	8:55	-----
10:00	11:10 #	11:30 a.m.
11:30	12:45 p.m.	-----
2:00 * p.m.	3:30 p.m.	3:10 ** p.m.
3:20	4:30	-----
4:05	5:15	-----
4:45	6:00	-----
5:45 *	7:15	6:55 **
Weekends & Holidays		
8:30 a.m. *	10:00	9:40 a.m.
10:00	11:10 # a.m.	11:30 a.m.
11:30 a.m.	12:45 p.m.	-----
2:00	3:10 #	3:30
3:30 #	5:00	4:40
5:15	6:30	-----
7:30 *	9:00	8:40
# To Vallejo via Pier 41. * To FB via Pier 41. ** To Vallejo via Ferry Building.		
FARES: One-way		
Adult (13-64)	\$13.00	Call (707) 64-FERRY or visit www.sanfranciscobayferry.com for updated information.
Senior (65+)/Disabled/Medicare	\$6.50	
Child (6-12)	\$6.50	
DayPass	\$24.00	
Monthly Pass (Bus / Ferry)	\$290.00	
w/Muni	\$349.00	

Take the Ferry to GIANTS BASEBALL AT AT&T PARK FROM VALLEJO			
Weekday Day Games 12:45 PM Game Start Times			
Depart Vallejo	Arrive AT&T	Depart AT&T	Arrive Vallejo
11:00 am	12:00 noon	* see below	60 min. later
Weekend & Holiday Games 1:05 PM Game Start Times; Other Start Times**			
Depart Vallejo	Arrive AT&T	Depart AT&T	Arrive Vallejo
11:00 am	12:00 noon	* see below	60 min. later
Weekday Night Games – Return Service Only 7:15 PM Game Start Times			
Return-Only Service	Depart AT&T	Arrive Vallejo	
	*see below	60 min. later	
*Ferry departs AT&T Park 30 minutes after the last out.			

FROM OAKLAND/ALAMEDA				
Weekday Night Games 7:15 & 7:35 pm Games				
Leave Alameda	Leave Oakland	Arrive AT&T	Depart AT&T	Arrive Ala/Oak
6:05 p.m.	6:20 p.m.	6:55p.m.	*see below	25-30 min. later
ALL WEEKEND & HOLIDAY GAMES 1:05 pm Game Start Times**				
Leave Oakland	Leave Alameda	Arrive AT&T	Depart AT&T	Arrive Ala/Oak
11:30 a.m.	11:50 a.m.	12:20p.m.	*see below	25-30 min. later
*Ferry departs AT&T Park 20 minutes after last out. ** For Other Weekend and Holiday Game Start Times Visit www.SanFranciscoBayFerry.com/giants				

VALLEJO - ANGEL ISLAND			
Weekends Only			
Depart Vallejo	Arrive Pier 41	Depart Pier 41	Arrive Angel Is.
8:30 am	9:30 am	9:45 a.m.	10:10 a.m.
Depart Angel Is.	Arrive Ferry Bldg	Depart Ferry Bldg	Arrive Vallejo
4:30 p.m.	6:00 p.m.	6:30 p.m.	7:45 p.m.

ALAMEDA/OAKLAND			
Weekdays to San Francisco			
Depart Oakland	Depart Alameda	Arrive S.F. Ferry Bldg.	Arrive S.F. Pier 41
6:00 a.m.	6:10 a.m.	6:30 a.m.	--
7:05	7:15	7:35	--
8:10	8:20	8:40	--
9:15	9:25	9:45	10:00
11:00	10:50	11:30	11:45
1:35 p.m.	1:20 p.m.	2:00 p.m.	2:20 p.m.
2:40	2:25	3:05	3:20
4:45	4:30	--	5:15
5:50	5:40	6:20	--
6:20^	6:05^	--	6:50
6:55	6:45	7:20	--
7:55	7:45	8:25	8:40
8:55	8:45	---	9:25
Weekdays from San Francisco			
Depart S.F. Pier 41	Depart S.F. Ferry Bldg.	Arrive Alameda	Arrive Oakland
--	6:30 a.m.	7:15 a.m.	7:05 a.m.
--	7:35	8:20	8:10
--	8:40	9:25	9:15
10:15 a.m.	10:30	10:50	11:00
12:45 p.m.	1:00 p.m.	1:15 p.m.	1:30 p.m.
1:45	2:00	2:20	2:35
3:45	4:10	4:30	4:45
5:00	5:20	5:40	5:50
5:20	5:40	6:00	6:15
---	6:25	6:45	6:55
---	7:25	7:45	7:55
8:05	8:25	8:45	8:55
^On Giants game days, departure goes directly to AT&T Park instead of Pier 41 from East Bay.			

Harbor Bay Ferry (EAST END OF ALAMEDA/S.F.)			
Weekday Commute			
Depart Harbor Bay Island	Arrive S.F. Ferry Bldg.	Depart S.F. Ferry Bldg.	Arrive Harbor Bay Island
6:30 a.m.	6:55 a.m.	7:00 a.m.	7:25 a.m.
7:30	7:55	8:00	8:25
8:30	8:55	4:35 p.m.	5:00 p.m.
5:05 p.m.	5:30 p.m.	5:35	6:00
6:05	6:30	6:35	7:00
7:05	7:30	7:35	8:00
No weekend or holiday service			
ONE WAY FARES: Regular Clipper			
Adult	\$6.50	\$5.00	
Youth (5-12)	\$3.25	\$3.25	
Children (under 5)	Free	Free	
Disabled / Seniors (62 & over)	\$3.75	\$3.75	
Active Military	\$5.25	N/A	
Commuter (book of 10)	\$55.00	N/A	
Commuter (book of 20)	\$100.00	N/A	
Monthly Pass (book of 40)	\$185.00	N/A	
Free MUNI and AC Transit Transfers Provided			

ALAMEDA/OAKLAND - ANGEL ISLAND				
Weekends Only				
Leave Oakland	Leave Alameda	Arrive Pier 41	Depart Pier 41	Arrive Angel Is.
9:00 am**	9:10 am**	9:35 am**	9:45 am**	10:05 am**
Leave Angel Island	Arrive Alameda	Arrive Oakland		
3:35 pm	4:10 pm	4:20 pm		
** Available beginning May 18 - October 27, 2013				

ALAMEDA/OAKLAND			
Weekend Schedules Good Through May 12 See sanfranciscobayferry.com for May 18-26			
Weekends and Holidays to San Francisco			
Depart Oakland	Depart Alameda	Arrive S.F. Ferry Bldg.	Arrive S.F. Pier 41
10:00 a.m.	10:10 a.m.	10:30 a.m.	10:45 a.m.
11:30	11:20	12:00 p.m.	12:15 p.m.
1:45 p.m.	1:30 p.m.	2:20	2:35
4:15	4:05	4:45	4:55
5:45	5:35	----	6:25
7:10	7:00	----	7:50
Weekends and Holidays from San Francisco			
Depart S.F. Pier 41	Depart S.F. Ferry Bldg.	Arrive Alameda	Arrive Oakland
9:15 a.m.	9:25 a.m.	10:10 a.m.	9:55 a.m.
10:50	---	11:20	11:30
1:00 p.m.	1:10 p.m.	1:30 p.m.	1:45 p.m.
3:30	3:45	4:05	4:15
5:00	5:15	5:35	5:45
6:30	6:40	7:00	7:10
ONE WAY FARES: Regular Clipper 10 Ticket Book 20 Ticket Book Monthly Pass			
Adult (13+)	\$6.25	\$4.75	\$50.00 \$90.00 \$170.00
Youth (5-12)	\$3.50	\$3.50	
Senior (65+) *	\$3.10	\$3.10	
Active Military *	\$5.00	N/A	
Child under 5	FREE	FREE	
School Groups*	\$2.00	N/A	
Short Hop**	\$1.50	N/A	
Short Hop Senior	\$075	N/A	
* Restrictions apply, see sanfranciscobayferry.com for details			
** One-way between Oakland and Alameda or between the SF Ferry Building and Pier 41.			
Fares subject to change.			

SOUTH SAN FRANCISCO		
Weekday to SSF/Oyster Point		
Depart Alameda	Depart Oakland	Arrive SSF
6:30 a.m.	6:40 a.m.	7:15 a.m.
7:30	7:40	8:15
8:00	8:10	8:45
5:10 ** p.m.	4:55 p.m.	5:40 p.m.
Weekday to Alameda & Oakland		
Depart SSF	Arrive Oakland	Arrive Alameda
7:20 a.m.	8:05 a.m.	7:50 a.m.
4:20 p.m.	4:55 p.m.	5:10 p.m.
5:20	6:00 *	5:50
6:20	6:55	7:10
*Boat departs from Oakland first. **Boat arrives Alameda first.		
Wednesday & Friday midday SF service		
Depart SSF	Arrive Ferry Building	Arrive Pier 41
9:00 AM	9:30 AM	9:45 AM
Depart Pier 41	Depart Ferry Building	Arrive SSF
Wed. only 1:50 p.m.	Wed. only 2:05 p.m.	Wed. only 2:40 p.m.
Fri. only 3:15 p.m.	Fri. only 3:30 p.m.	Fri. only 4:00 p.m.
One-way FARES:		
Adult		\$7.00
Youth (5-12 years)		\$3.50
Seniors (65+ yrs), Disabled, Medicare		\$3.50
Children under 5 (with an adult)		FREE
Short Hop2		\$1.50
Short Hop Senior, Disabled, Medicare		\$0.75

AROUND THE BAY IN MAY

Spring Open House at Rosenblum Cellars

Come celebrate spring on Saturday, May 18 with the folks at Rosenblum Cellars in Alameda. With a location right next to the Alameda Ferry Terminal, you can leave your car keys at home and enjoy the scenic boat ride from the San Francisco Ferry Building or Pier 41 right to Rosenblum Cellars' doorstep. The event features Rosenblum's award-winning wines, food from Alameda and East Bay restaurants, live music and case specials. Meet winemaker John Kane and watch Chef Joey Altman host cooking demos. The event is from 1 – 5 p.m. for the general public and open at noon for wine club members. Tickets are \$45 for the general public and \$35 for members. Call (510) 995-4100 or visit www.rosenblumcellars.com for more information.

Spring Boat Fest in Alameda

On shore and in water, the 2013 Spring Boat Fest goes full steam as it returns to Marina Village Yacht Harbor in Alameda, May 16-19 and debuts its new classic boat display. Larger than ever—the last event had 155 boats!—the festival will showcase sailboats and powerboats, from entry-level family cruisers to million-dollar yachts, plus the newest marine accessories and gear, educational seminars and music for boaters of all ages. The event is free and show hours are 12 – 5 p.m. on Thursday and Friday and 11 a.m. – 5 p.m. Saturday and Sunday. Visit www.boat-fest.com for more details on exhibitors, seminars and other exciting attractions.

Inaugural BottleRock Napa Valley Festival

The inaugural BottleRock Napa Valley festival will be held May 9-12 in the heart of the legendary Napa Valley, featuring over 60 artists, bands and performers from a variety of genres, including rock, soul/R&B, country, hip-hop, comedy and more during an incredibly diverse, four-day festival. Scheduled to appear are Kings of Leon, the Black Keys, Zac Brown Band, Furthur featuring Phil Lesh and Bob Weir, Jackson Browne and the Black Crowes. Each day will include a stellar lineup of many of the most sought-after and established names in music sprinkled with an exciting array of emerging performers, creating a one-of-a-kind music and comedy extravaganza. Situated on three stages spread over 26 acres on the grounds of the Napa Valley Expo in the City of Napa, BottleRock Napa Valley attendees will enjoy the best in wine and food from many of the finest vintners and culinary talents of the legendary Napa Valley. Approximately 60 vintner partners, along with artisanal micro-brewers, will be paired with dozens of Napa Valley restaurateurs and chefs, ensuring that BottleRock Napa Valley will provide a complementary culinary festival experience second to none. In contrast to other festivals where tens of thousands are packed into a dusty, crowded field, BottleRock Napa Valley will offer incredible venue sight lines, unsurpassed civility, unparalleled artist access and intimacy and creature comforts that reflect the hospitable spirit of the Napa Valley. For more information or to purchase tickets, visit www.bottlerocknapavalley.com.

Attention Thrill Seekers: RocketBoat Returns

The RocketBoat, a dual-engine speedboat that travels at 44 knots and carries up to 135 passengers, resumes operations in May for the 2013 season. Climb aboard RocketBoat for the ultimate high-speed adventure on San Francisco Bay and get blown away as you hold on for the most exhilarating ride of your life. Stunning views and a classic rock soundtrack add to the 30 minutes of fun. Never the same ride twice. The RocketBoat is operated by Blue & Gold Fleet and leaves daily out of PIER 39. Check with the Blue & Gold ticket booth on the day of your ride for an accurate schedule, as the cruises may not operate during inclement weather. For more information, visit www.rocketboatsf.com or call (415) 773-1188.

Art in the Park at Crissy Field

On May 22, an exhibition of eight large-scale steel sculptures by renowned artist Mark di Suvero—known for his bold, exuberant works that have shaped the language of modern sculpture—will open at Crissy Field in the Golden Gate National Parks. *Mark di Suvero at Crissy Field* is presented by the San Francisco Museum of Modern Art (SFMOMA) in partnership with the National Park Service and the Golden Gate National Parks Conservancy. The free, yearlong outdoor exhibition will be the largest display of di Suvero's sculptures ever shown on the West Coast and launches SFMOMA's next phase of off-site programming while the museum

completes a major expansion project. The exhibit also represents the crowning "community tribute" to the Golden Gate Bridge, closing the celebrations of the 75th Anniversary year. Free and open to the public, the exhibit runs through May 26, 2014. SFMOMA will also host a series of public programs related to the exhibition in September 2013. For the most up-to-date information about this exhibition, visit the www.sfmoma.org.

Planktonica Returns, Drifters Wanted!

Gulf of the Farallones National Marine Sanctuary and Farallones Marine Sanctuary Association present Planktonica on Friday, May 3 from 8 – 10 p.m. Explore the prolific world of plankton amid the relaxed ambiance of the Tide Pier above SF Bay, while DeeJay Euphonic spins intertidal lounge and laid-back reef beats while live plankton are projected on the big screen. Be dazzled by diatoms, dinoflagellates and copepods and discover bizarre larvae of barnacles, crabs and mussels. The event takes place at the Gulf of the Farallones National Marine Sanctuary Pier House at 991 Marine Drive, The Presidio, San Francisco. Cost is \$20 with two beverages included. Space is limited; advance tickets required; must be 21. For more information, contact Justin Holl at justin.holl@noaa.gov

To have your event or announcement considered for the Bay Crossings Around the Bay listings, please send information or a press release to: joel@baycrossings.com.

Sharing time with whales is a privilege.



415-331-6267

www.sfbaywhalewatching.com

TIBURON WINE Festival

Saturday

May 18

1 to 4pm

30th Anniversary



60 Wineries • Live Music • Silent Auction

tiburonwinefestival.org



Are you ready?

BIKE TO WORK DAY

MAY 9, 2013



- ➔ **Pledge to ride on Bike to Work Day – May 9.**
You will be eligible to win prizes!
Visit youcanbikethere.com
- ➔ **Team Bike Challenge competition starts May 1.**
Register your team at teambikechallenge.com
- ➔ **Plan your route.**
Go to bicycling.511.org

Also sponsored by  Metropolitan Transportation Commission — www.mtc.ca.gov



There's no law that says we had to build the best pollutant containment system in the industry...

...but we did. In fact, there are many things that the people of Bay Ship & Yacht have done over the years that have gone above and beyond what was required. Simply because we believe that being the model for the 21st Century shipyard means continually exceeding the level of service and satisfaction demanded by our customers.

Which is why we implemented a "Best Practices" pollution management system that ensures that procedures are written to the highest-possible standard. Which is why we installed a sophisticated drainage system under the entire yard, to capture any pollutants and process them in a separate tank farm containment area. Why we switched out all diesel-fuel compressors to electric. Not required by law, but



we did it anyway. And to prevent a calamity from happening, we took the extraordinary step of installing storm water separators and isolation valves that can be rapidly shut off, thus preventing a continuous run-off of pollutants into the Bay.

It's because we set our standards higher than others that we have emerged as a leading shipyard, not only among the commercial, historical and military communities, but also among those seeking new construction and repair of super-yachts.

We take a long-term view of the future, and to maintain our position at the forefront of the industry, we've invested heavily in facilities, processes and proven technologies. Our customers expect nothing less of us, which is why they keep returning to Bay Ship & Yacht.

== We are the 21st Century Shipyard ==



2900 Main Street, #2100 • Alameda, CA 94501 • www.bay-ship.com